

Communicate and Control ED Surge



Emergency Departments are in crisis

Wait times and volumes are increasing	>	2021 – US median boarding times approaching maximum (3.4h)
Clinical resources are stretched	>	Overall shortage of nurses in the US to reach 1.1 million by the end of the 2022
Patients leaving without being seen	>	US rate had doubled since 2017, rate is 10% in 5% of the hospitals
Emergency Departments are over capacity	>	Emergency rooms nationwide overcrowded to crisis levels (Yale study Oct.2022)
Patient length of stay is increasing	>	Average length of stay in US up 19% (Dec.2022)

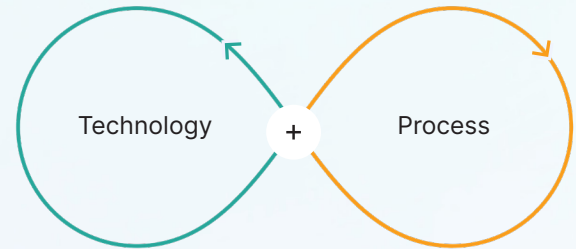
Combining Technology & Process

Technology

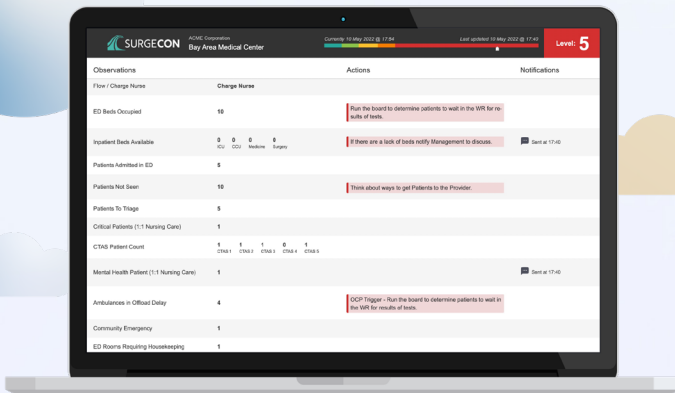
- Command Center
- Digital Overcapacity Protocols

Process

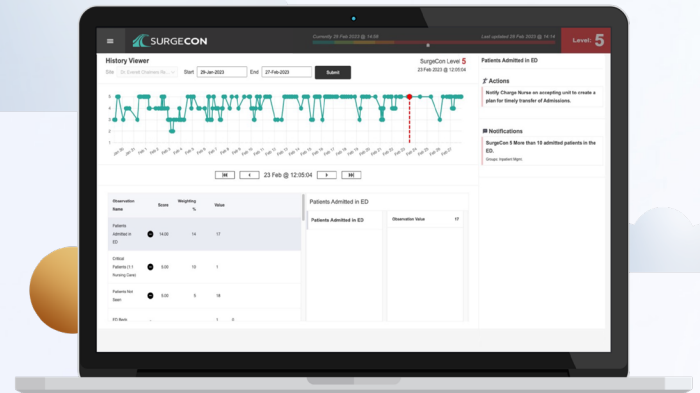
- Flow Center
- Hospital Wide Flow



Dashboard



Data Viewer



SurgeCon Outcomes

(* Eastern Health - NL)

- Left without being seen from **12% to 4%**
- Wait times from **140 mins to 60 mins**
- Length of Stay **down 27%**
- Physician Initial Assessment time **down 46%**
- Annual cost savings of **over \$3 Million**

SurgeCon Differentiator

- **ANALYZES** : Complex ED interactions at various thresholds to present a comprehensive view.
- **ACTIONABLE** : Not only data but actionable information.
- **AUTOMATION** : reducing front-line workload and increasing ED performance.

SurgeCon Partners



SurgeCon provides an objective view of the status of our department. Instead of the shift feeling busy, we know it is busy! The data points serve as a reminder to the team to regroup and address the current situation internally or secure external assistance.

IWK Emergency Leadership

Halifax, Nova Scotia



With the help of SurgeCon, we are reducing wait times at the Emergency Department at Carbonear General Hospital. This solution has allowed us to improve patient flow in the ED and, as a result, provide timelier access to other hospital services for patients.

Ronald Johnson

Vice President - Innovation & Rural Health, Eastern Health Newfoundland and Labrador